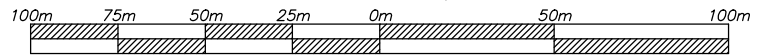
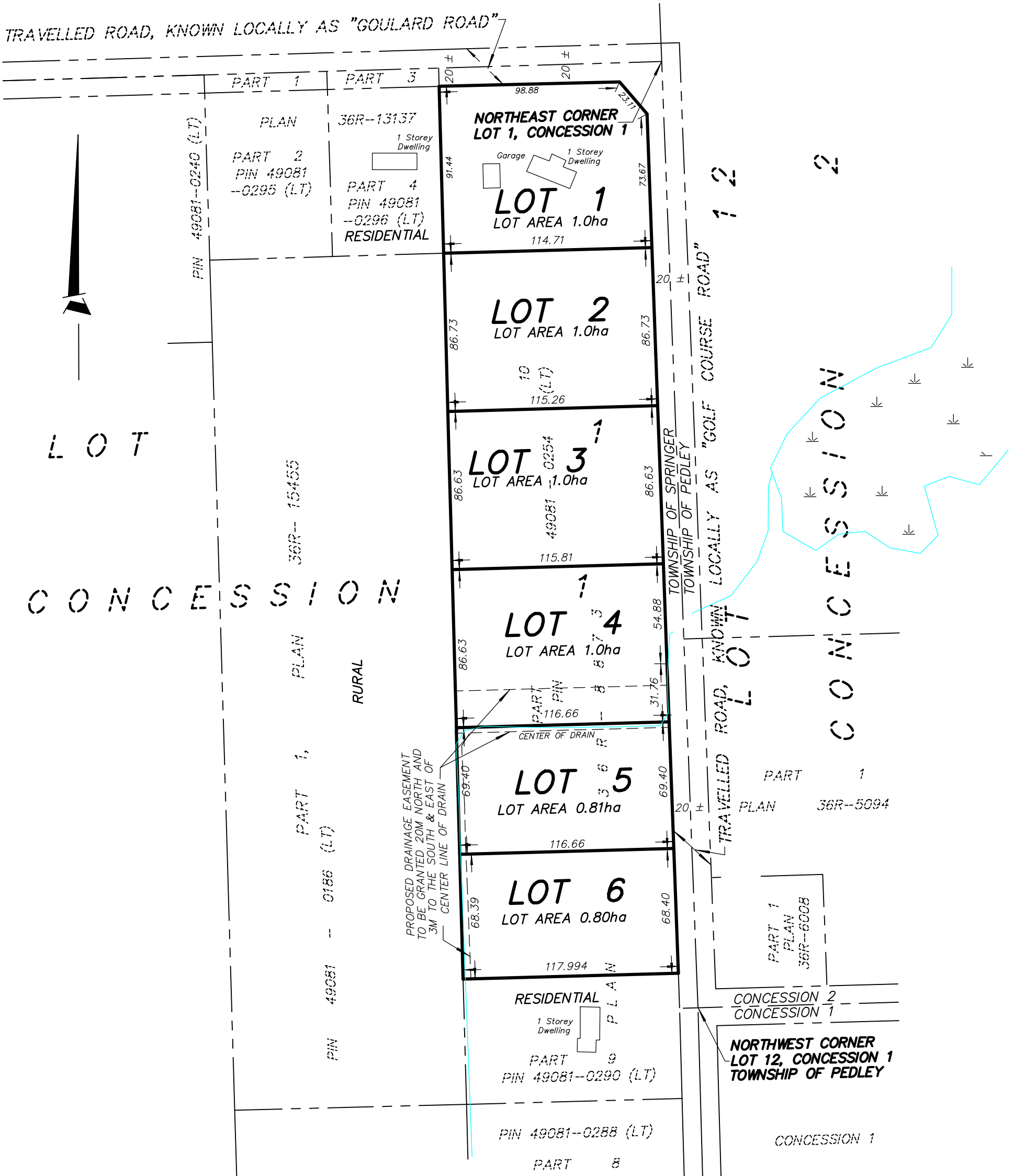


SKETCH TO ACCOMPANY ZONING BY-LAW AMENDMENT
PART OF LOT 1, CONCESSION 1
GEOGRAPHIC TOWNSHIP OF SPRINGER
MUNICIPALITY OF WEST NIPISSING
 DISTRICT OF NIPISSING
 PAUL GOODRIDGE, OLS

SCALE 1 : 2,000



TRAVELLED ROAD, KNOWN LOCALLY AS "GOULARD ROAD"



LOTS 1 TO 3 FROM RURAL TO RURAL/RESIDENTIAL
LOTS 4 TO 6 FROM RURAL TO RURAL/RESIDENTIAL SPECIAL

GOODRIDGE GOULET
PLANNING & SURVEYING LTD.

ONTARIO LAND SURVEYOR - LAND USE PLANNER - DEVELOPMENT CONSULTANTS
 UNIT 1 - 490 MAIN STREET EAST, NORTH BAY, ON P1B 1B5
 705-493-1770 paul.goodridge@ggpsltd.com
 705-493-7974 don.goulet@ggpsltd.com

PLAN	FIELD	OFFICE	FILE
2192-25_calc		D. GOULET	2192-25