

STURGEON RIVER

THE PRESENT WATER'S EDGE HAS BEEN ACCEPTED AS THE BEST AVAILABLE EVIDENCE OF THE ORIGINAL POSITION OF THE WATER'S EDGE OF THE STURGEON RIVER. ANY CHANGE IS THE RESULT OF ACCRETION OR EROSION.

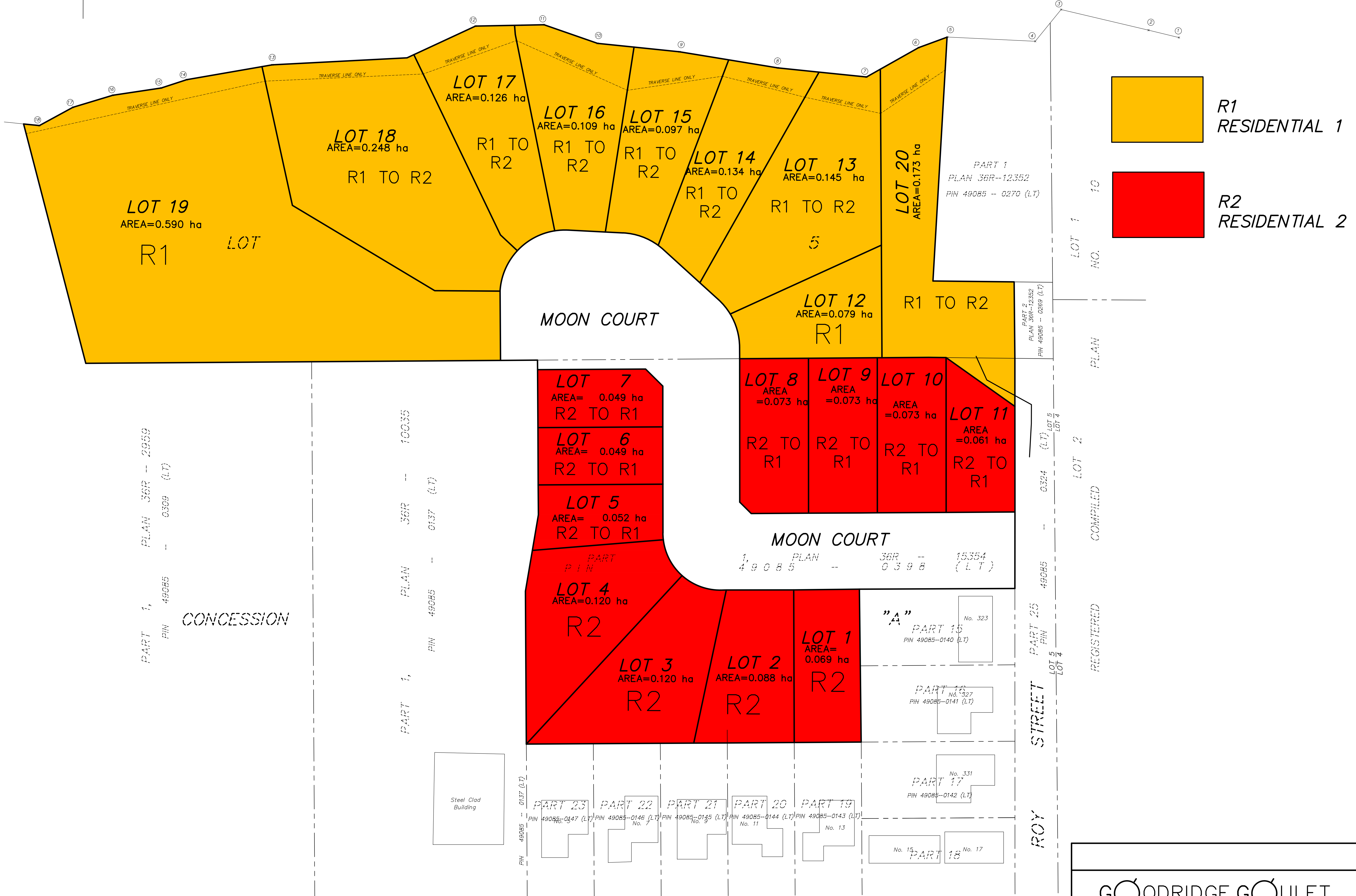
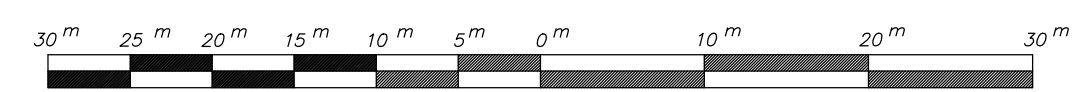
# SKETCH TO SHOW CHANGE IN ZONING

PLAN OF SUBDIVISION OF  
 PART OF NORTH HALF LOT 5  
 CONCESSION 'A'  
 GEOGRAPHIC TOWNSHIP OF SPRINGER  
 MUNICIPALITY OF WEST NIPISSING  
 DISTRICT OF NIPISSING  
 PAUL GOODRIDGE, O.L.S.  
 SCALE: 1 : 500



STURGEON RIVER

FLOW  
 CROWN



**R1**  
RESIDENTIAL 1

**R2**  
RESIDENTIAL 2

**GOODRIDGE GOULET**  
 PLANNING & SURVEYING LTD.

ONTARIO LAND SURVEYOR - LAND USE PLANNER - DEVELOPMENT CONSULTANTS  
 UNIT 1 - 490 MAIN STREET EAST, NORTH BAY, ON P1B 1B5  
 705-493-1770 paul.goodridge@ggpltd.com  
 705-493-7974 don.goulet@ggpltd.com

PLAN	FIELD	OFFICE	FILE
2/2025/2020/1003-20 MP Final.dwg	A.D. / G.T.	M.H. / D.G.	1003-20