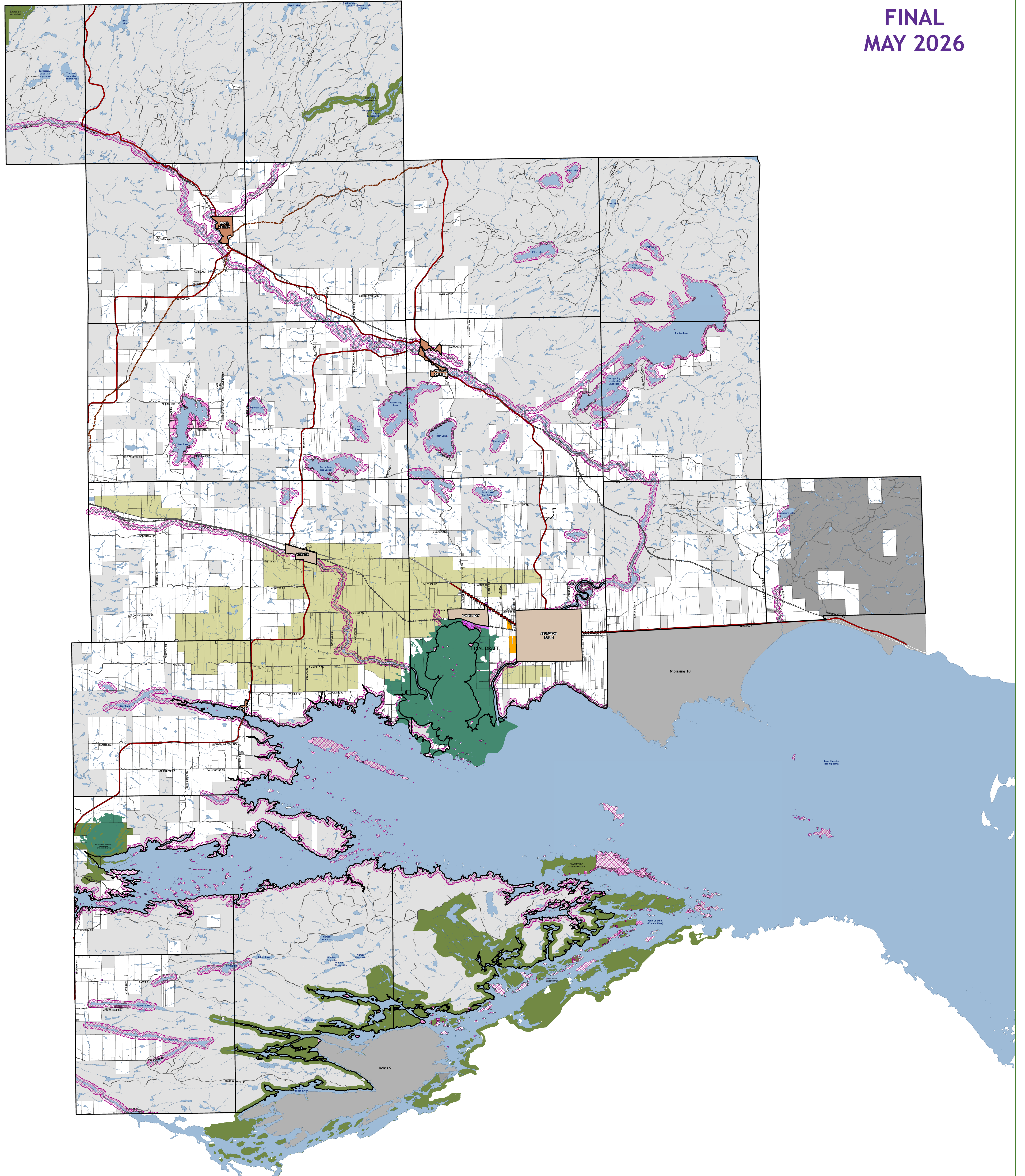


FINAL
MAY 2026



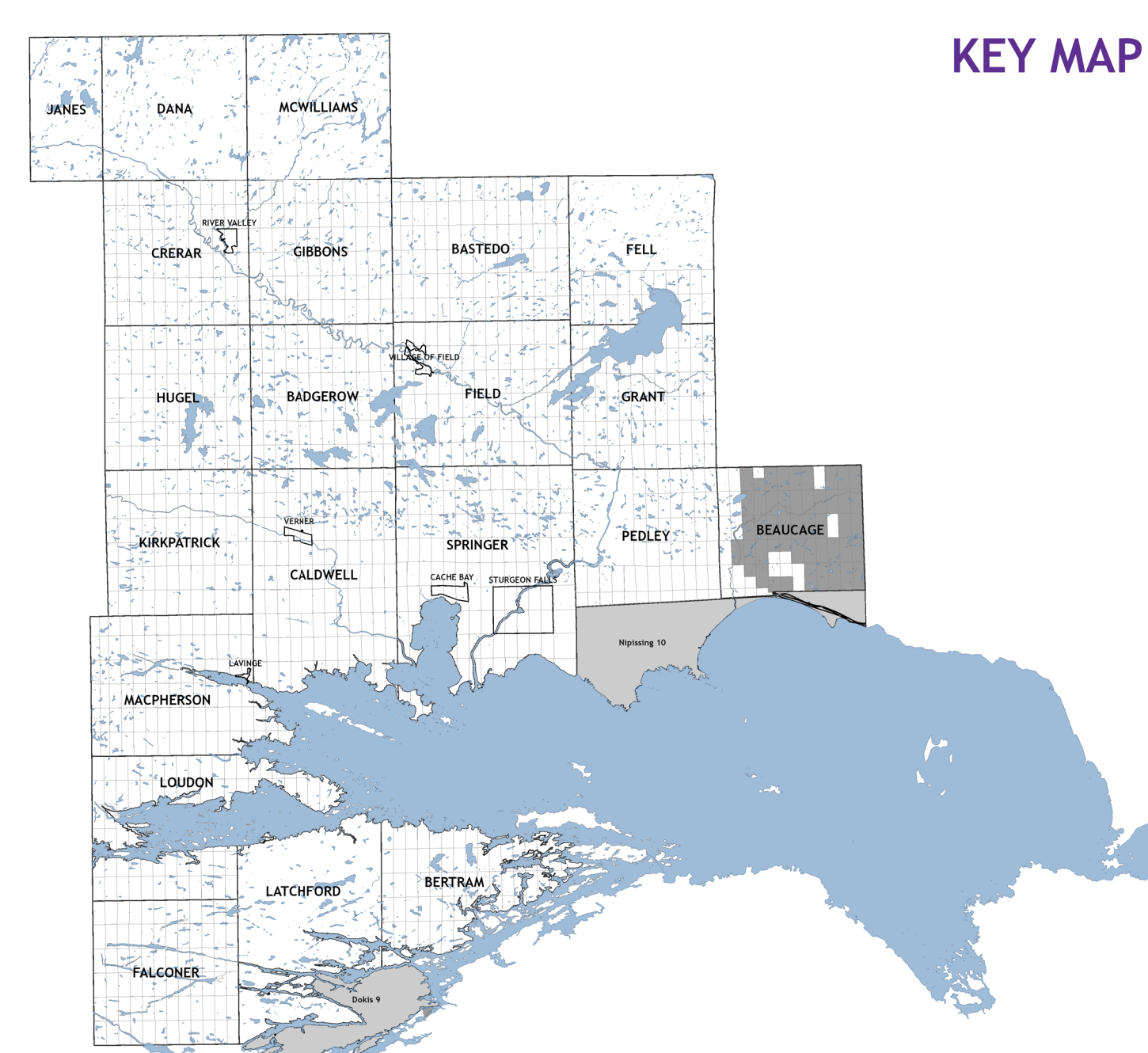
LAND USE

- | | | | |
|--|-----------------------------------|--|--------------------|
| | URBAN SETTLEMENT AREA DESIGNATION | | FIRST NATION LANDS |
| | RURAL SETTLEMENT AREA DESIGNATION | | FEDERAL CROWN LAND |
| | RURAL AREA DESIGNATION | | CROWN LAND |
| | EMPLOYMENT AREA DESIGNATION | | PARCEL FABRIC |
| | COMMUNITY FACILITY DESIGNATION | | WATERCOURSES |
| | AGRICULTURAL AREA DESIGNATION | | WATERBODIES |
| | WATERFRONT AREA DESIGNATION | | |
| | HIGHWAY COMMERCIAL OVERLAY | | |
| | SHORELINE PROTECTION OVERLAY | | |
| | PROVINCIAL PARKS | | |
| | PROVINCIAL SIGNIFICANT WETLANDS | | |

TRANSPORTATION

- | | |
|--|--------------------|
| | PROVINCIAL HIGHWAY |
| | MUNICIPAL ROADS |
| | PRIVATE ROADS |
| | RESOURCE ROADS |
| | PIPELINE |
| | RAILWAY |

KEY MAP



2,500 1,250 0 2,500 5,000 Meters

This map is provided for illustrative purposes only. The information shown has been compiled from multiple sources. Although every effort has been made to represent the data accurately, the map should not be used as a precise indicator of the location of features, roads, or other geographic elements.

Copyright The Municipality of West Nipissing, 2026. All rights reserved.