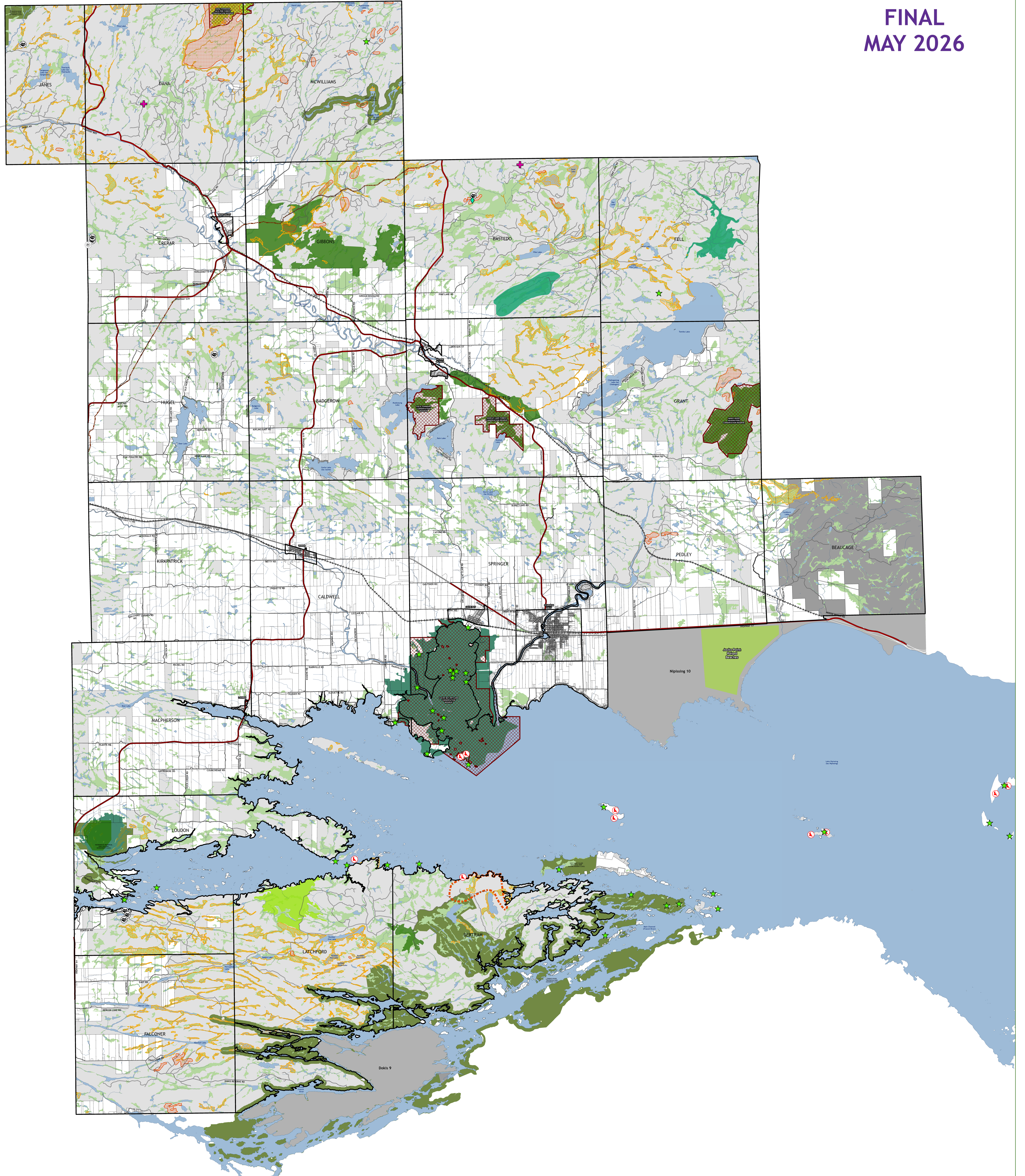


FINAL  
MAY 2026



**NATURAL FEATURES**

- PROVINCIALLY SIGNIFICANT WETLANDS
- LOCALLY SIGNIFICANT WETLANDS
- PROVINCIALLY SIGNIFICANT ANSI - LIFE SCIENCE
- PROVINCIALLY SIGNIFICANT CANDIDATE ANSI - LIFE SCIENCE
- PROVINCIALLY SIGNIFICANT CANDIDATE ANSI - EARTH SCIENCE
- REGIONALLY SIGNIFICANT CANDIDATE ANSI - LIFE SCIENCE
- DEER WINTERING - STRATUM 1
- MOOSE AQUATIC FEEDING AREAS
- MOOSE LATE WINTERING AREA
- CONSERVATION RESERVES
- PROVINCIAL PARKS

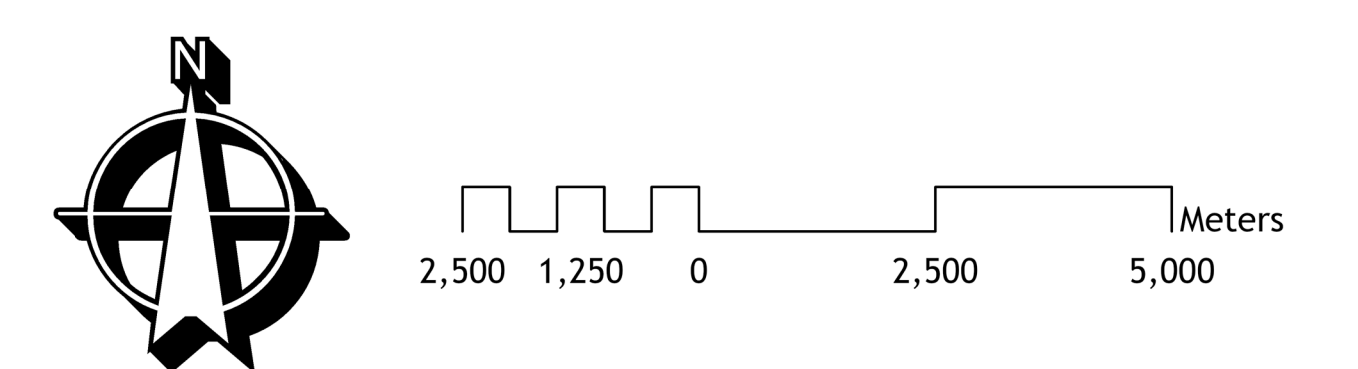
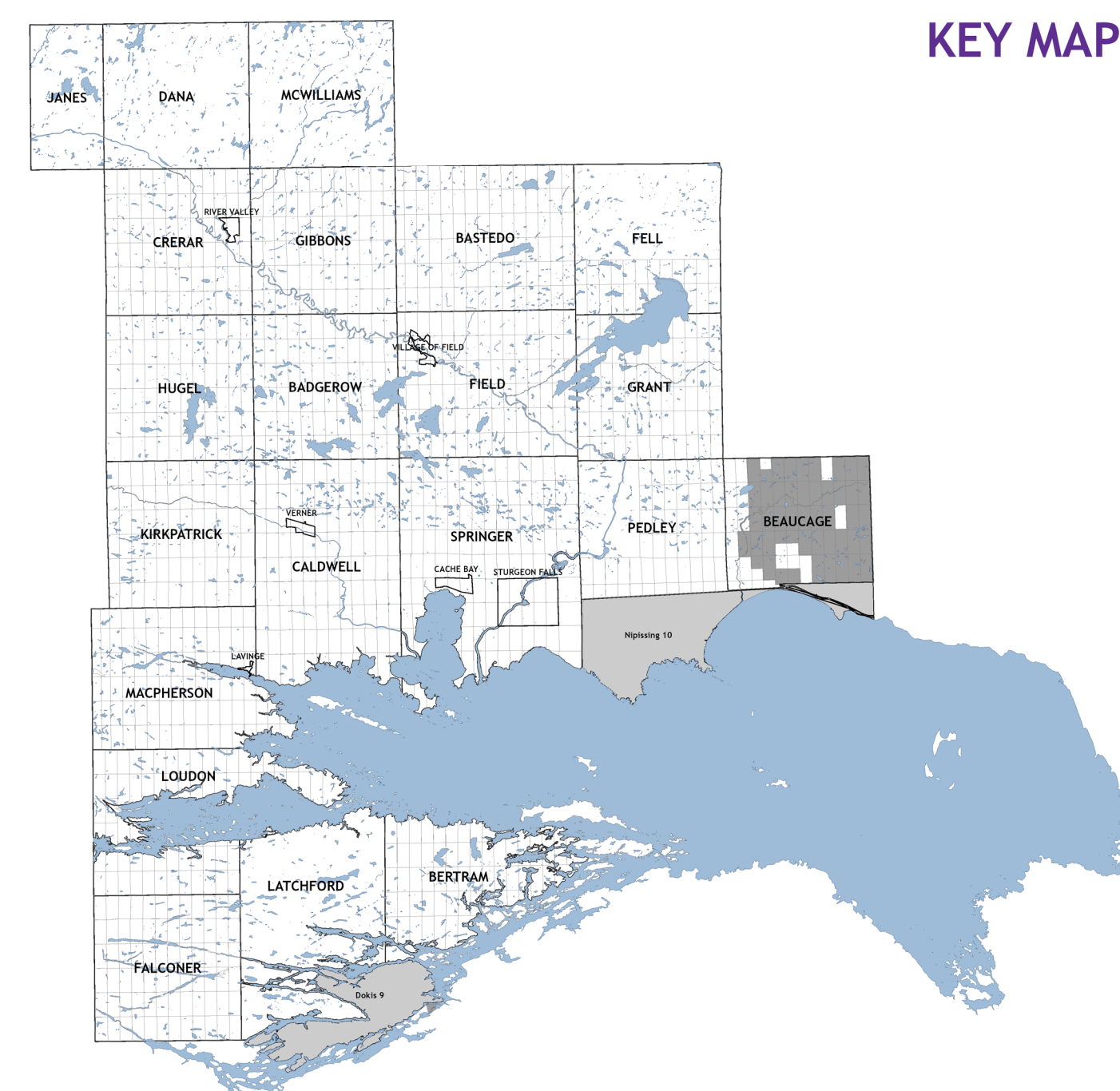
- BALD EAGLE NESTING
- COMMON RAVEN NESTING
- OSPREY NESTING
- NORTHERN GOSHAWK NESTING
- RED-TAILED HAWK NESTING
- BROAD-WINGED HAWK NESTING

- SETTLEMENT AREAS
- FEDERAL CROWN LAND
- PARCEL FABRIC
- FIRST NATION LANDS
- CROWN LAND

- WATERCOURSES
- WATERBODIES

**TRANSPORTATION**

- PROVINCIAL HIGHWAY
- PRIVATE ROADS
- PIPELINE
- MUNICIPAL ROADS
- RESOURCE ROADS
- RAILWAY



*This map is provided for illustrative purposes only. The information shown has been compiled from multiple sources. Although every effort has been made to represent the data accurately, the map should not be used as a precise indicator of the location of features, roads, or other geographic elements.*

Copyright The Municipality of West Nipissing, 2026. All rights reserved.